



DIASAFE®

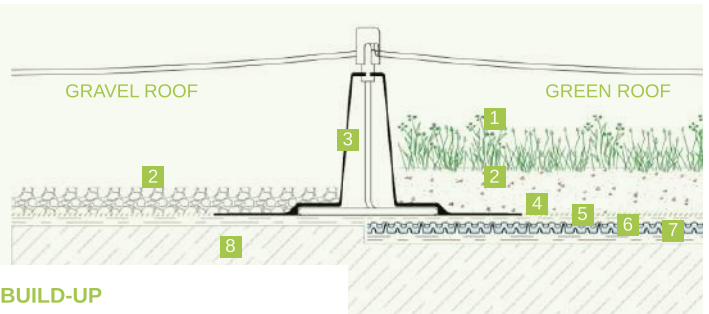
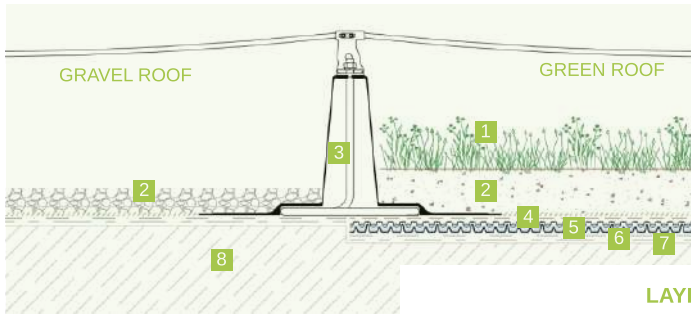
FALL PROTECTION SYSTEMS



LINE



LINE MULTI



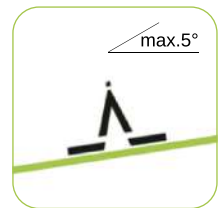
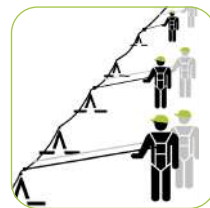
LAYER BUILD-UP

- | | |
|--|--|
| <ul style="list-style-type: none"> 1 Vegetation 2 Ballasting material 3 DiaSafe® damping plate 4 Filter geotextile | <ul style="list-style-type: none"> 5 Drainage and water retention board 6 Protection geotextile 7 Root resistant waterproofing layer 8 Existing build-up (roof deck) |
|--|--|

PRODUCT DESCRIPTION

A DiaSafe® anchoring device is a fall protection system that has been tested and certified by TÜV Austria, in accordance with the EN 795:2012 (types A and C) and CEN/TS 16415:2013 standards. It provides safety for individuals working on roofs, using appropriate personal protective equipment (such as harnesses).

The DiaSafe® products can be used both as fall restraint and fall arrest anchoring systems, and they comply with both Hungarian and European Union safety regulations.



DiaSafe® system ensures the safety of personnel working on flat roofs with a maximum 5° incline, serving as a fall restraint system or also as a fall arrest system.

In dry conditions at 80 kg/m² distributed over the whole ballasting surface.

Cost-effective: the posts can be positioned (from 1,5m) up to 8m according to the plan.

Minimum structural requirement: With the additional mat providing a larger area, as little as 30 kg/m² of ballast needs to be used.*

When using the DiaGlider-Fix, max. 1+1 person can connect to the system, while when using a carabiner, up to 1+1 person can be connected between every second section.

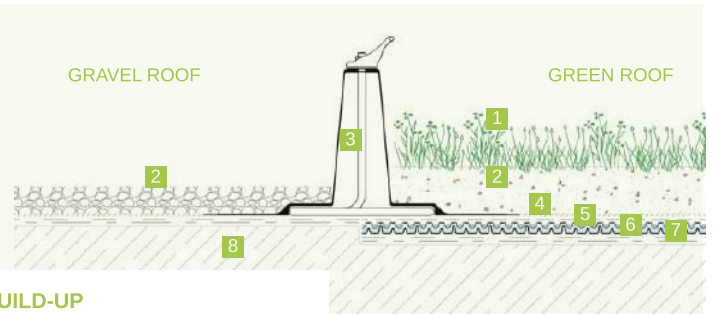
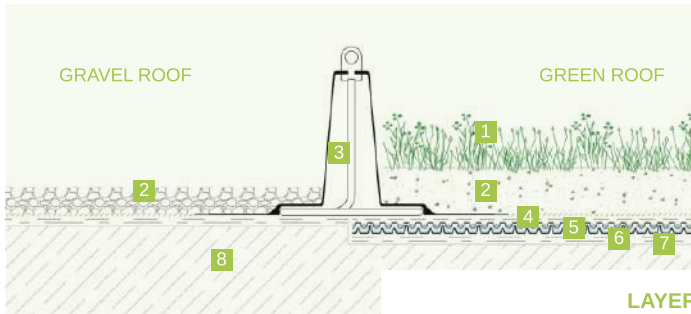
*Please contact our colleagues for more information!



SINGLE



SINGLE SEAT

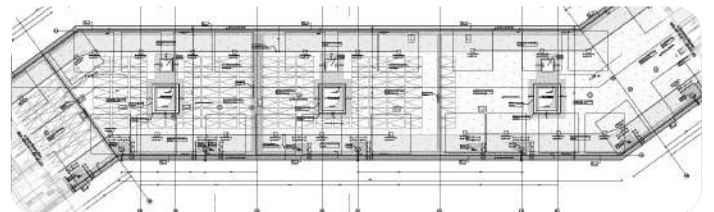


LAYER BUILD-UP

- | | |
|--------------------------|--------------------------------------|
| 1 Vegetation | 5 Drainage and water retention board |
| 2 Ballasting material | 6 Protection geotextile |
| 3 DiaSafe® damping plate | 7 Root resistant waterproofing layer |
| 4 Filter geotextile | 8 Existing build-up (roof deck) |



The service provided by the A.P.P. DIADEM® team ensures the selection of the most suitable system according to the identified requirements, including the preparation of installation plans and cost estimates.



KEY INFORMATION NEEDED IN ORDER TO PROVIDE PLANS

- Roof top view drawing
- Elevations and section drawings indicating the height levels
- Inclination of the roof
- Placement of Superstructures or Later Installed Components (Solar Panels, Outdoor AC Unit, etc.)
- The need for protecting Skylights





Contact

A.P.P. Kereskedő és Szolgáltató Kft.
Fehérvári út 75.
H-9028 Győr

Email: info@diadem.com
Mobil: +36 96 512 910
www.diadem.com

APP DACHGARTEN GMBH
Jurastrasse 21.
D-85049 Ingolstadt

Email: info@diadem.com
Mobil: +49 841 370 9496
www.grundach.com

DIADEM CH AG
Rauracherweg 1.
CH-4710 Balsthal

Email: info@diadem.com
Mobil: +41 79 328 37 74
www.diadem.ch

GREEN UP THE ROOF!