

Our references



Contact

DIADEM CH AG
Rauracherweg 1.
CH-4710 Balsthal

Email: info@diadem.com
Mobile: +41 79 328 37 74
www.diadem.ch

APP DACHGARTEN GMBH
Jurastrasse 21
D-85049 Ingolstadt

Email: info@diadem.com
Mobile: +49 841 370 9496
www.grundach.com

A.P.P. Kereskedő és Szolgáltató Kft.
H-9028 Győr
Fehérvári út 75.

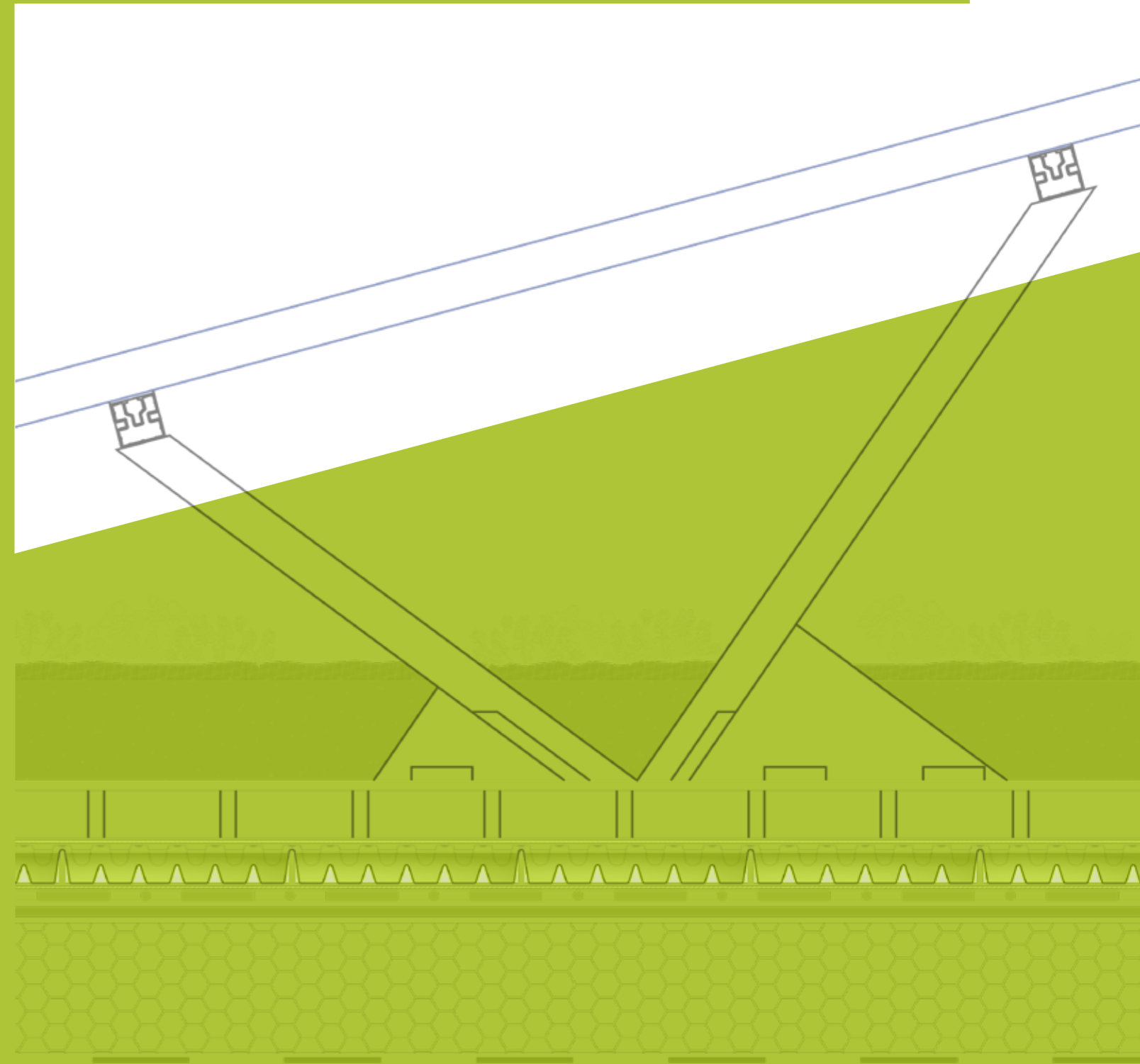
Email: info@diadem.com
Phone: +36 96 512 910
www.diadem.com



DIASOLAR®

SOLAR SYSTEM INTEGRATED IN THE LAYER STRUCTURE

A green cover is always the best.



PHOTOVOLTAICS, GREEN ROOFS AND WATER RETENTION IN ONE!

APP KFT. MAKES IT POSSIBLE.

Combine the benefits of greening and PV installation with the DiaSolar and use your flat roof in a smart way.

ADVANTAGES

- ✓ Penetration-free, ballast due to roof greening
- ✓ Quick & easy installation
- ✓ Optimal use of roof area
- ✓ No loss of yield due to shading of plants
- ✓ Module height lower edge min. 30 cm from substrate
- ✓ Snow slides off quickly
- ✓ No accumulation heat

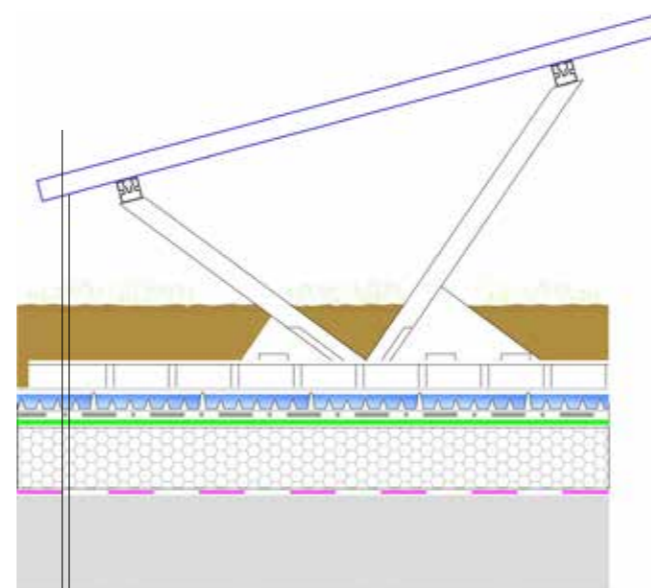
FACTS

- Plate dimension: 198 x 97 x 6 cm
- Net weight per unit: 12 kg
- Water storage volume: 43 liters
- Material: Aluminum, stainless steel, Magnelis, HDPE

FLAT ROOF ASSEMBLY SYSTEM: DIASOLAR

Panel size of DiaSolar®:	198 x 97 x 6 cm
Weight per unit:	12 kg, Weight without load, without pv-modul
Water storage tank volume:	43 Liter
Compressive strength (unfilled):	> 25 kN/m2
Compressive strength filled (flush filled):	> 70 kN/m2
Water drainage:	<ul style="list-style-type: none"> • $i = 0,01$ (= 1% Gradient) 0,4 l/(m*s) • $i = 0,01$ (= 1% Gradient) 0,4 l/(m*s) • $i = 0,01$ (= 1% Gradient) 1.0 l/(m*s)
Material:	Aluminium, magnelis, stainless steel and HDPE
Module inclination:	10° standard, 15° or 20° optional
Ballasting:	The ballast and spacing of the panel must be calculated by DIADEM® in accordance with the Wind Zone Plan.
Roof connection:	No structural connection to the roof required
Roof inclination:	Maximum 5°
Unit consists of:	<ul style="list-style-type: none"> • 1 x DiaSolar® console • approx. 2 m module support profile • Auxiliary material (screws, profile connectors, clamps)
Warranty:	25 years for all aluminium and stainless steel parts 12-year warranty on the tray
Other:	<ul style="list-style-type: none"> • No roof penetrations. • Optimal utilisation of the roof surface. • Ideal for a uniform roof greening • No disturbing interconnections • No shading from plants

DIASOLAR® WITH GREEN ROOF



DIADEM® MAT25 sedum mat

DIADEM® SEM substrate for extensive green roofs

DIADEM® DiaSolar® solar panel holder

DIADEM® VLF-150 filter and separator geotextile

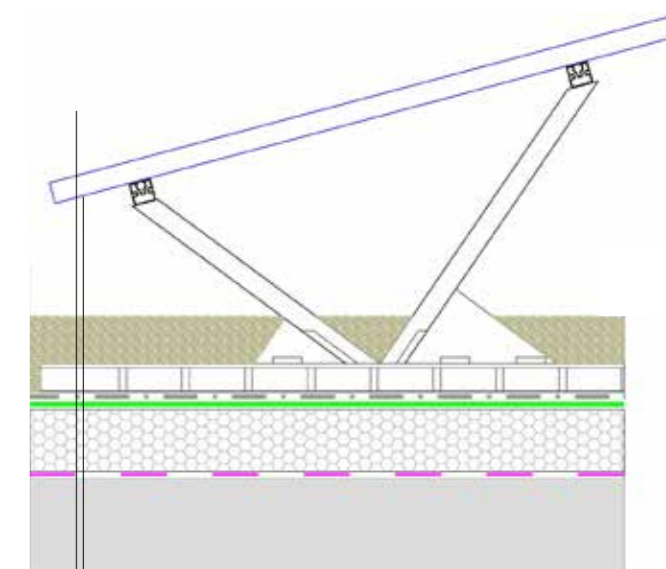
DiaDrain-25H Flow-delay retention board

DIADEM® VLU-300 technical protection fleece for extensive roofs

Root-resistant waterproofing

Further layer build-up according to architect's specification

DIASOLAR® WITH GRAVEL ROOF



Gravel ballast

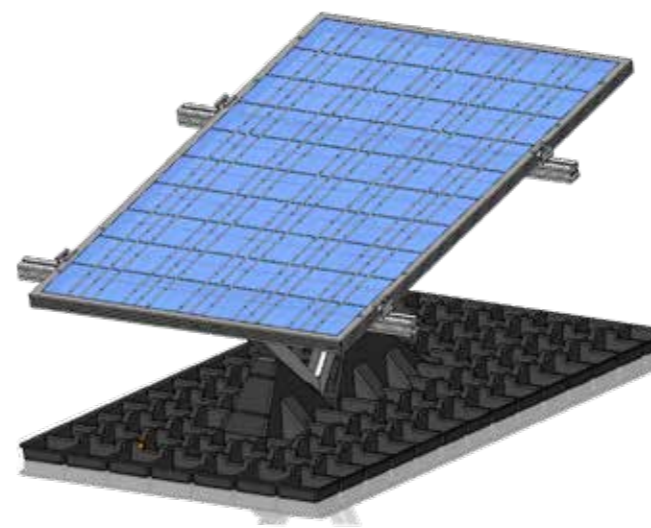
DIADEM® DiaSolar® drainage board

DIADEM® VLF-150 filter geotextile

Root-resistant waterproofing

Further layer build-up according to architect's specification

DIASOLAR® VERTICAL



DIASOLAR® HORIZONTAL

